

We can now share large numbers of documents with external parties... **saving time, preventing duplication, and reducing email overload.**



Janet Upton, Manager Knowledge Leadership, Land Information New Zealand

**ORGANISATION**

Land Information New Zealand

**INDUSTRY**

Public Sector

**SOLUTION**



**BENEFITS AT A GLANCE**

**Secure** sharing of information

**Collaboration** with external parties

**Integration** with Objective ECM

**User friendly** and intuitive

**Email alerts** and audit trail

## Land Information New Zealand

**Traditional email exchange was proving very clunky, large attachments and small inbox size limits frequently prevented sharing information easily. The staff at Land Information New Zealand (LINZ) were driven to unsupported, unsecured methods of sharing information and removable storage devices. This created unnecessary risks and caused delays to time critical projects. LINZ needed to find a better solution!**

### ABOUT LAND INFORMATION NEW ZEALAND

LINZ makes sure New Zealand has accurate information about where people and places are; people have confidence in their property rights and Crown property is well managed for future generations. Responsibilities include managing land titles, geodetic and cadastral survey systems, topographic information, hydrographic information, managing Crown property and supporting government decision making around foreign ownership.

Janet Upton, Manager Knowledge Leadership, said: "LINZ's purpose is to lead the creation of a world-class location information system, used to support better decision making and inspire innovation. To achieve this, LINZ works closely with external parties, from individual subject matter experts to government agencies and private sector companies."

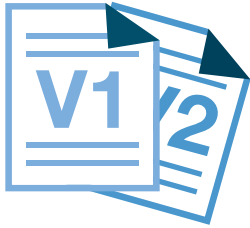
### EXTERNAL COLLABORATION

In 2014 LINZ initiated the 'Collaborative Tools Investigation Project' to assess technologies that would help the team to work smarter with external parties.

"At that time, our staff predominantly used email to send documents to external parties for comment. Keeping track of changes and ensuring our ECM held the latest version was a difficult task. It resulted in discrepancies between the information in individual email accounts and our documents and records management system Objective ECM.

"Put simply, we were losing control of important information to help our business run smoothly - and something needed to change," said Janet.

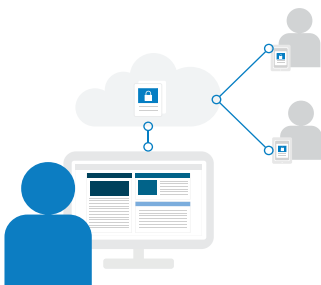
# KEY BENEFITS



VERSION CONTROL  
BOTH INTERNALLY & EXTERNALLY  
**MADE EASY**



CONNECTIONS  
**GREW x5**  
IN ONE YEAR



**SENSITIVE INFORMATION  
CAN BE SHARED  
OUTSIDE THE  
ORGANISATION**

LINZ assessed a number of tools including Objective Connect, Office 365, DropBox, GoogleDocs, secure FTP server etc. They piloted a range of secure tools based upon the degree and type of collaboration required.

“Objective Connect quickly became a stand out favourite amongst our staff. Although we had intended to run a limited pilot of Connect, our staff loved it so much that we were inundated with requests for access. We quickly moved from pilot to production. During the past year we’ve increased our Connect connections from 10,000 to 20,000 to 50,000 as more and more teams used Connect to securely share documents with external parties,” said Janet.

## SHARE FROM ECM

Connect Link enables the sharing of information with external parties directly from electronic document management systems, such as Objective ECM, HP TRIM and SharePoint.

“Unlike other file share and collaborative tools, the Connect Link interface meant staff could share documents directly from Objective ECM, removing the hassle of exporting and uploading duplicated documents to another system or storage device. External participants found it easy to upload documents to share and these were sync’d back into our ECM as new versions, ensuring everyone had access to the latest documents,” said Janet.

## COLLABORATION

A number of the team at LINZ have leadership roles on cross-government and industry working groups. Objective Connect provides a great way to manage document collaboration and dissemination. Richard Murcott, SDI Technical Leader - Sector Data Programmes, said: “Before using Objective Connect, keeping track of the many documents I shared with external parties, each with a multitude of versions, demanded considerable agility. Now I enjoy the assurance that the records are being managed right where they should be (in Objective). When a record has been accessed by a share participant I get an alert by email; very useful for helping me keep up with my remote collaborators.”

## BOARD PAPERS

The biggest user of Objective Connect is the New Zealand Geographic Board Ngō Pou Taunaha o Aotearoa, which is an independent statutory body of government that is serviced by LINZ. The board has 10 members located around New Zealand plus 20 additional observers and support staff. Meeting several times a year, members and others receive hundreds of documents for review prior to meetings. All reports and supporting documents used to be sent out in paper or on CD-ROMs, taking days to collate and dispatch - it is all now shared via Objective Connect. Secretary for the New Zealand Geographic Board, Wendy Shaw said: “Our process is well defined for Board documents and folders, which are structured around our meeting agendas. It’s easy and quick.”

## THE FUTURE

“Objective Connect has become integral to the way we work at LINZ. It enables us to securely collaborate with external parties directly from our ECM, removing the need for time consuming workarounds. We love its user-friendly and intuitive interface and the way Objective is continuously improving the product with features like versioning, chat and task allocation.”

“We predict Objective Connect usage at LINZ will continue to increase for the foreseeable future. It’s a great tool that helps us work smarter and more securely every day!” said Janet.

## ABOUT OBJECTIVE CORPORATION

Objective Corporation (ASX:OCL) creates information and process governance solutions that are effortless to use and enable organisations to confidently advance their own digital transformation.

Designed for regulated industries, these solutions turn the imperative of compliance, accountability and governance into an opportunity to streamline business processes and deliver the innovative services that customers expect.

### OBJECTIVE CORPORATION LIMITED

Asia Pacific: +61 2 9955 2288 | Europe: +44 1628 640 460  
[www.objective.com](http://www.objective.com)

With a heritage in Enterprise Content Management (ECM), Objective’s expanded solutions extend governance across the spectrum of the modern workplace; underpinning information, processes and collaborative work-spaces.

Through a brilliant user experience, people access the information they need to progress processes from wherever they choose to work.

